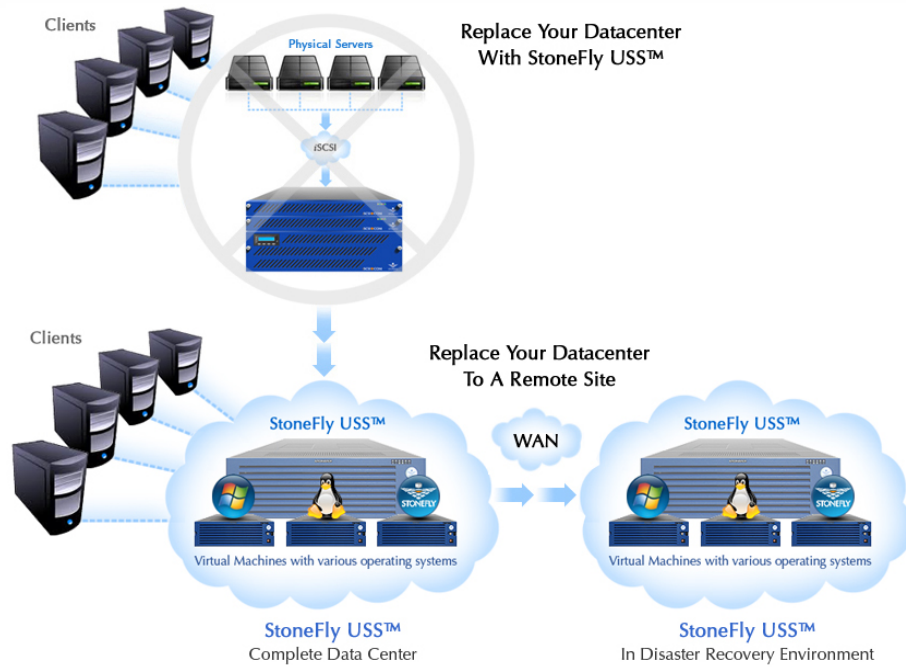




Unified Storage & Server (USS™) Appliance





Unified Storage & Server (USS™) Appliance

USS™ is an ideal solution to consolidate all your Server and Storage systems into one easy to manage appliance. Use of virtualized operating systems allows for complete hardware utilization and considerable reduction in power/cooling costs. USS™ flexibility replaces the “Fixed Hardware Model” of the past with on-demand resource allocation (such as CPU, memory, storage, etc.) based on your application needs. Select from three different editions: Standard Edition that includes a Virtual IP SAN Appliance (SCVM™) and the ability to create additional Virtual Storage or Servers as needed. Archiver Edition adds a Virtual archiver server, and Cloud edition adds a Virtual Cloud Server.



USS™ Series	USS1600	USS2400
		
High Performance & High Availability platform	Two Quad core XEON processors 24 or 48 GByte Memory 6G SAS technology	Hot-swap drives with Raid Protection Redundant Hot-swappable Power Supplies Dynamic storage expansion
iSCSI Storage / Server Ports	Standard-1Gb: 6x, Optional-1Gb: Up to 14x Optional-10Gb: 1x up to 8x (CX4, SFP+ Copper or SR/LR Optical)	
HW RAID Levels	0,1,5,6,10,50	
Storage Capacities	<u>VM OS:</u> - For Virtual Machines Operating System - Single or Mirrored SATA 300GB-10K or Single or Mirrored 240G SSD	<u>VM OS:</u> - For Virtual Machines Operating System - Single or Mirrored SATA 300GB-10K or Single or Mirrored 240G SSD
(Base Unit + 3 Expansion Units)	<u>VM Data:</u> - For Virtual Machines Data - SATA/SAS-6G-7200RPM: 8 to 264TB - SAS-6G-15K RPM: 2.4 to 52.8TB - SSD: 1920GB to 52.8TB	<u>VM Data:</u> - For Virtual Machines Data - SATA/SAS-6G-7200RPM: 12 to 288TB - SAS-6G-15K RPM: 2.4 to 57.6TB - SSD: 1920GB to 57.6TB

USS1600E Expansion Unit		3U Rackmount , Quad-SAS Interface with per unit capacities of: SATA/SAS-6G-7200RPM: ½ full: 8, 16, 24TB, Full: 16, 32, 48TB SAS(6G-15K): ½ full: 2.4, 3.6, 4.8TB, Full: 4.8, 7.2, 9.6TB SSD: ½ full: 1920GB, 4800GB Full: 3840GB, 9600GB
USS2400E Expansion Unit		4U Rackmount , Quad-SAS Interface with per unit capacities of: SATA/SAS-6G-7200RPM: ½ full: 12, 24, 36TB, Full: 24, 48, 72TB SAS(6G-15K): ½ full: 3.6, 5.4, 7.2TB, Full: 7.2, 10.8, 14.4TB SSD: ½ full: 2880GB, 7200GB, Full: 5760GB, 14400GB

SCVM™ (IPSAN VM):



- iSCSI Based Storage Provisioning Appliance
- Multiple Gigabit or 10Gb (copper or optical) iSCSI port teaming, failover, and load balancing
- Comprehensive IPSAN volume performance reporting and statistics
- StoneFusion utilizing multiple virtualization processing cores with separate DATA Packet and command queuing cache (Patented)
- MPIO & Jumbo frame support
- Web based Intuitive User Interface
- Simple, on-demand, no downtime volume or storage expansion
- Copy-on-write Snapshot with Read/Write, Scheduling, Rollback, and VSS agents for Exchange, SharePoint, SQL, backup SW, etc
- Synchronous mirroring
- Campus mirroring (iSCSI mirroring)
- Asynchronous Replication/Mirroring (CDP) with delta transfer and schedules
- Volume based Encryption (AES256 block level encryption)
- Thin Provisioning with Space Reclamation

USS Standard Edition:

- Stonefly SCVM™
- Windows 7 32/64 Bit VM
- Windows 2008/R2 Server VM
- Windows Storage Server (WSS) 2008 R2 VM
- N-Block NAS VM
- Linux VM

USS Archiver Edition: Standard plus Archiver Server VM

USS Cloud Edition: Standard plus Cloud Server VM

Physical specification	USS1600 / USS1600E	USS2400 / USS2400E
		
Form Factor	3U Rackmount	4U Rackmount
Dimensions (HxWxD)	5.2"x17.2"x25.5" (132x437x648mm)	7"x17.2"x26" (178x437x660mm)
Gross Weight	½ Full: 87lbs (39.5Kg) Full: 99lbs (44.9Kg)	½ Full: 96lbs (43.5Kg) Full: 114lbs (51.7kg)
Power requirements	Dual 1200W Power Supplies, Dual Cords 100V-10A, 240V-4A, 60-50Hz	Dual 1200W Power Supplies, Dual Cords 100V-11A, 240V-4.5A, 60-50Hz
Operating Temperature	10° to 35°C (50°F to 95°F)	10° to 35°C (50°F to 95°F)
Relative Humidity	8 to 90%, non-condensing	8 to 90%, non-condensing

StoneFly.com
www.stonefly.com
www.iscsi.com

Phone: 510.265.1616
 Fax: 510.265.1565
 Email: sales@stonefly.com

Headquarters
 21353 Cabot Blvd
 Hayward, CA 94545

San Diego Office
 6191 Cornerstone Court, #105
 San Diego, CA 92121